

LOOKING FOR ENVIRONMENTAL DRIVERS OF BLUE WHITING RECRUITMENT IN THE PORCUPINE BANK (NE ATLANTIC)

Francisco Baldo¹, Masuma Chowdhury^{2,3}, Gonzalo González-Nuevo¹, Francisco Velasco¹ and Irene Laiz²

¹Instituto Español de Oceanografía (IEO-CSIC), ²Universidad de Cádiz (UCA), ³Quasar Science Resources

francisco.baldo@ieo.es

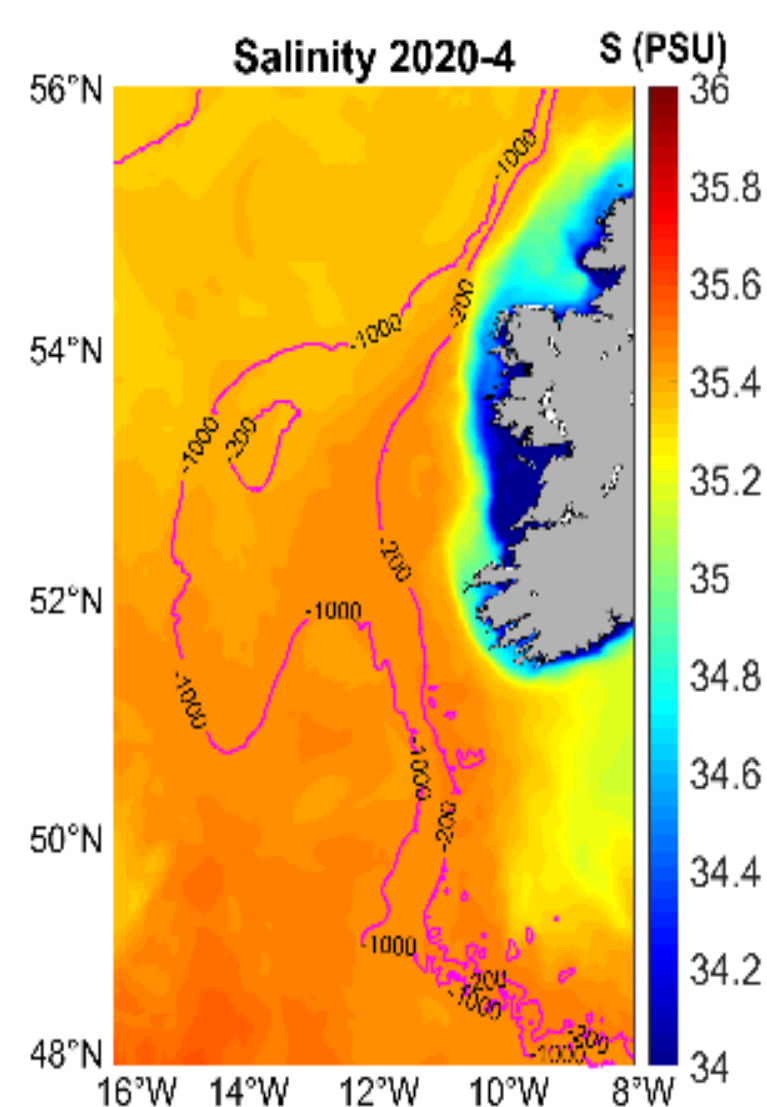
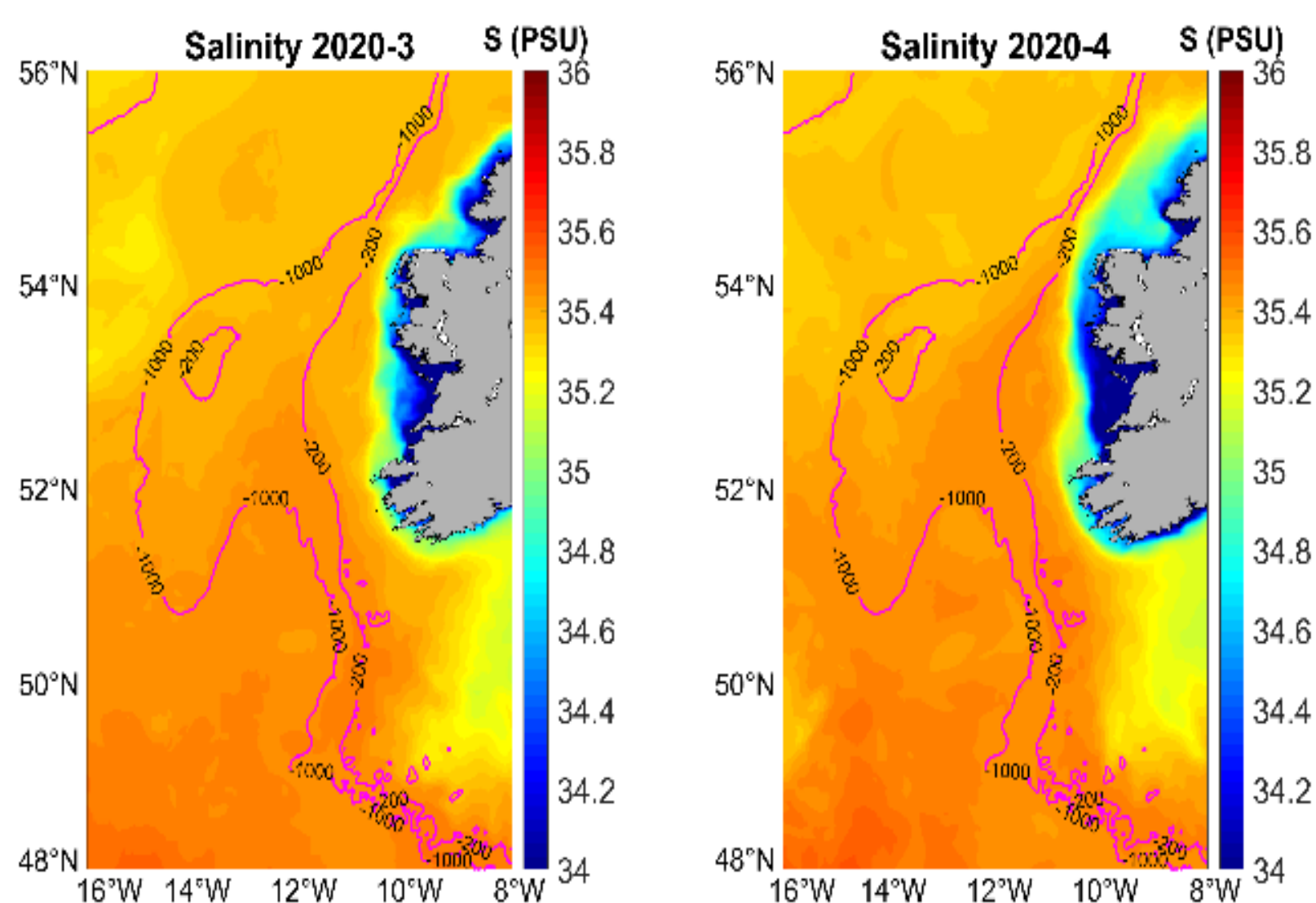
Blue Whiting-Spawning Season

March 2020

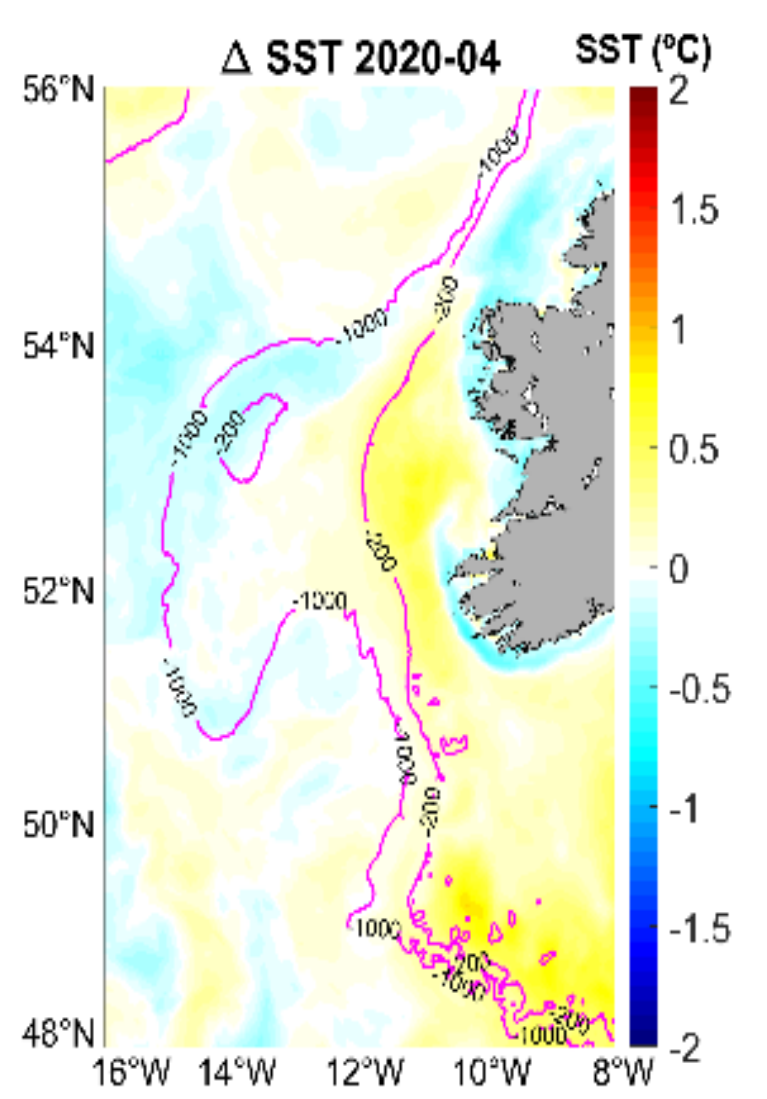
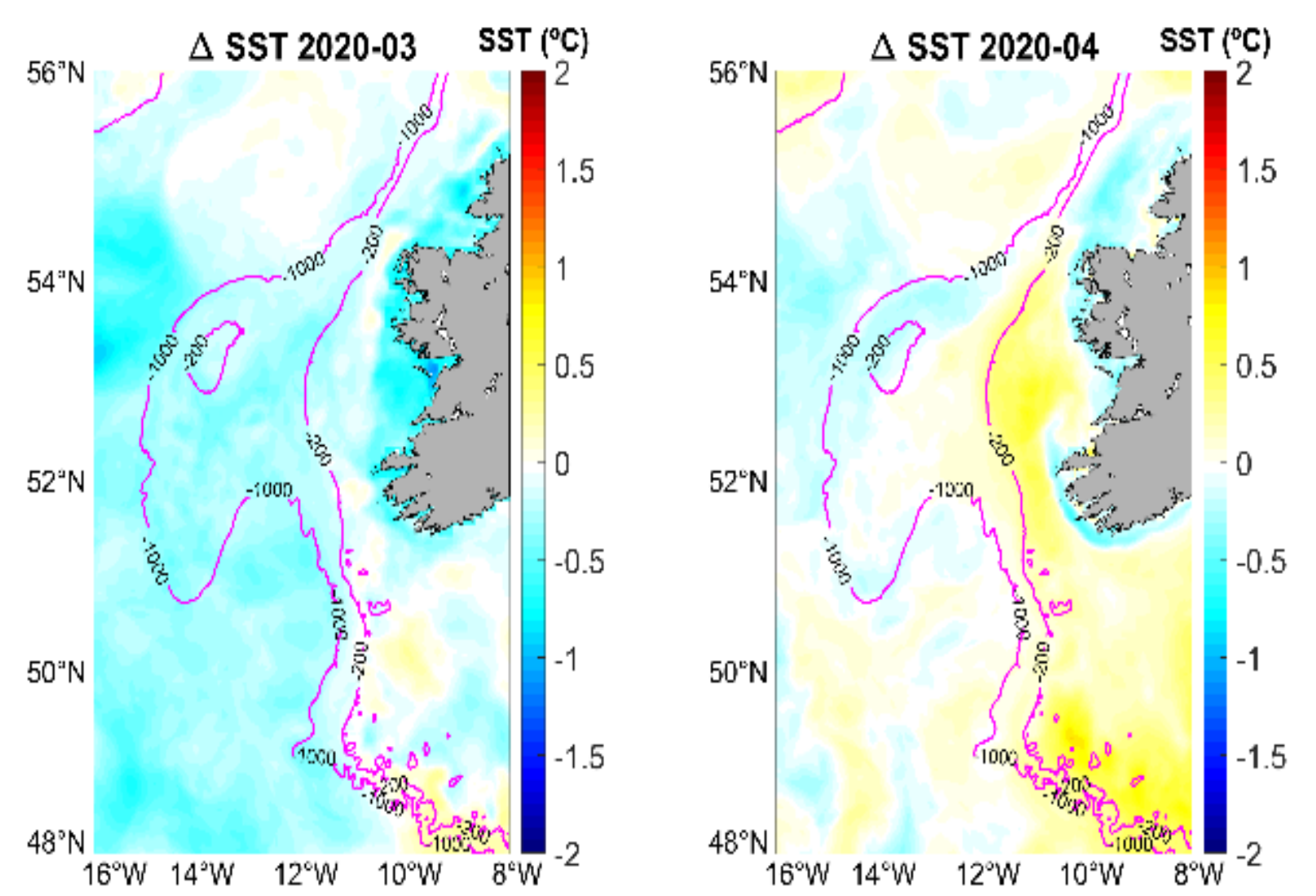
April 2020

Spanish Bottom Trawl Survey on the Porcupine Bank

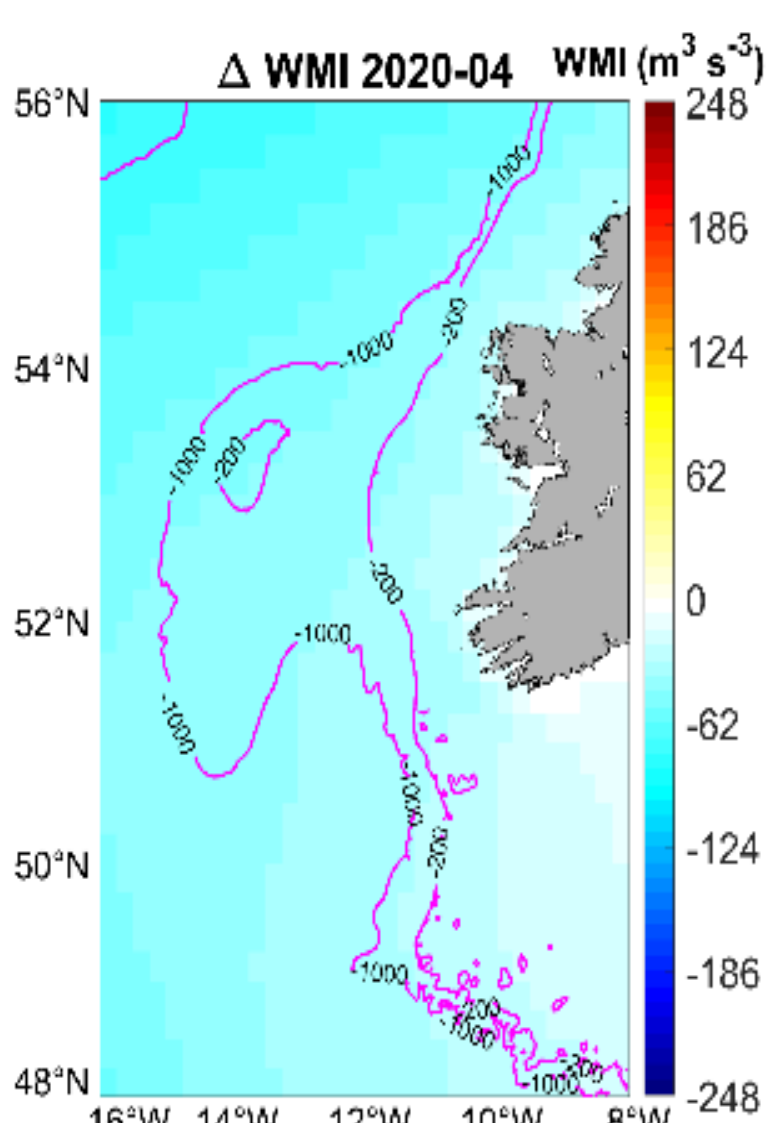
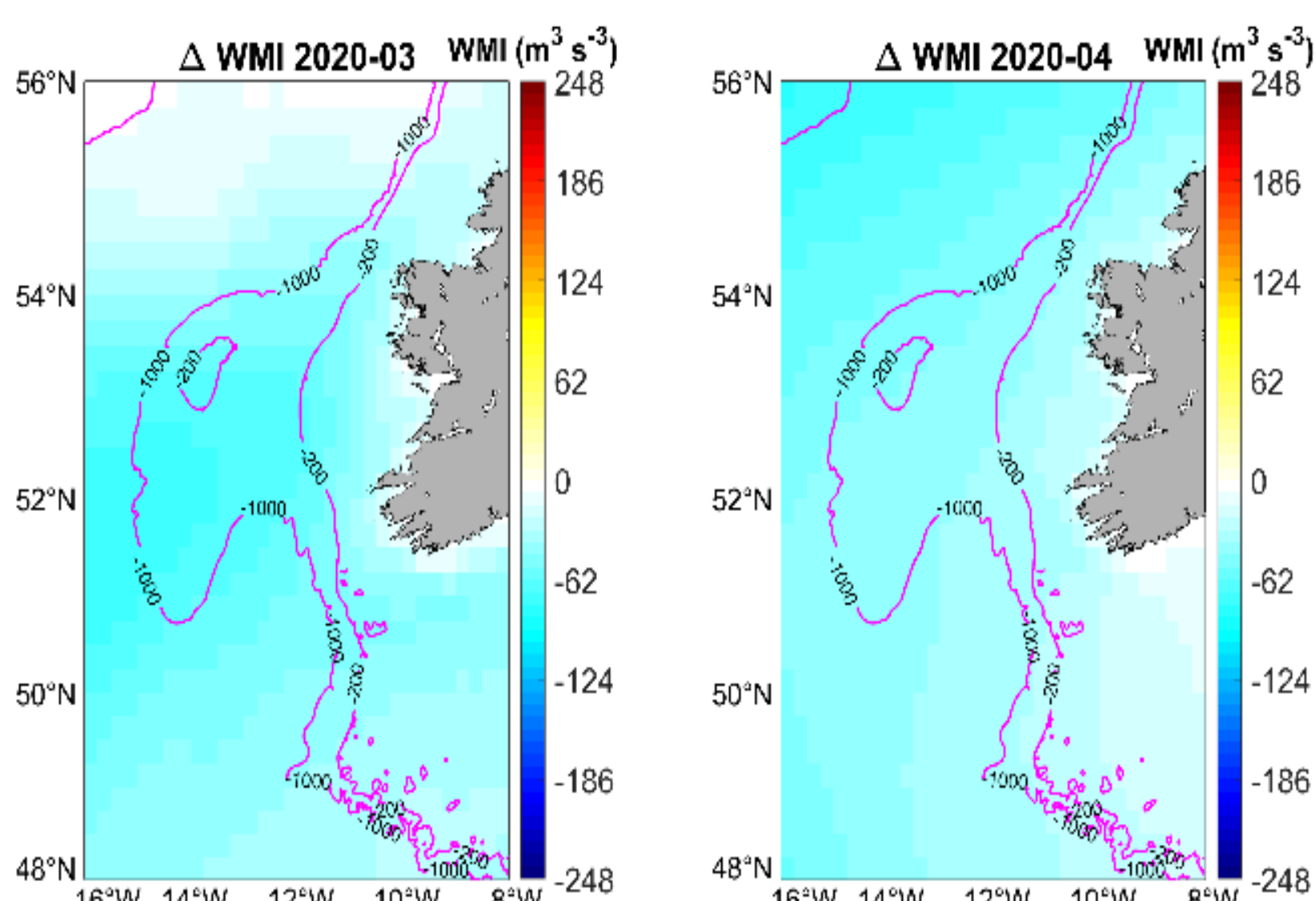
September 2001-2020



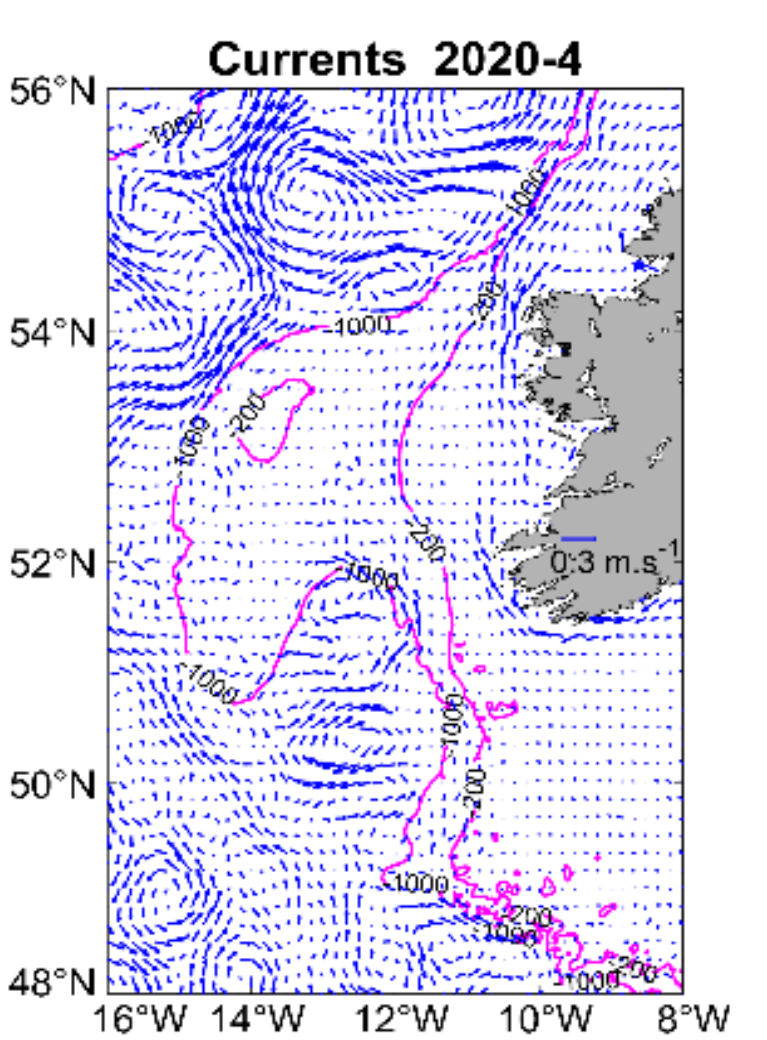
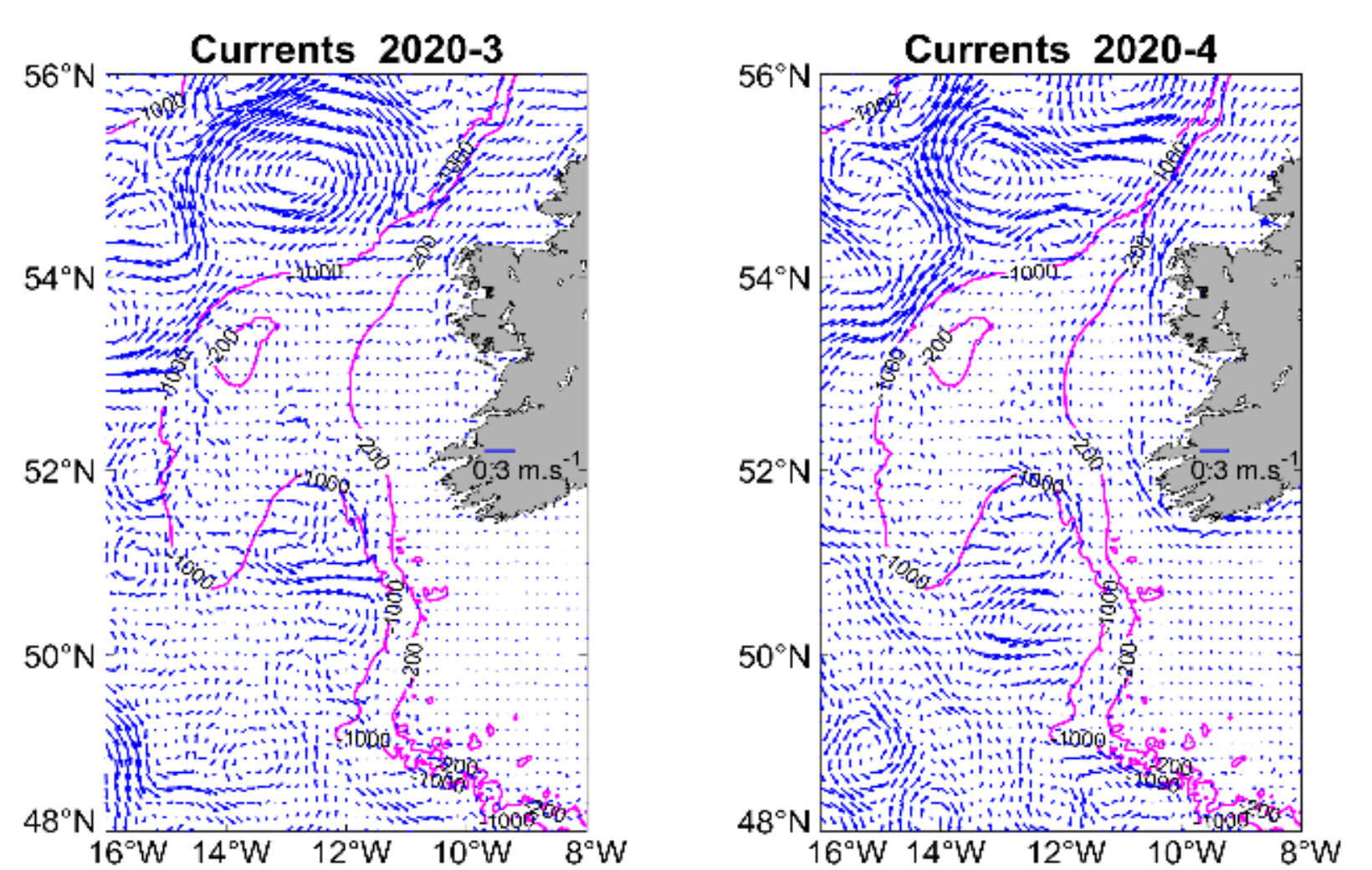
Salinity



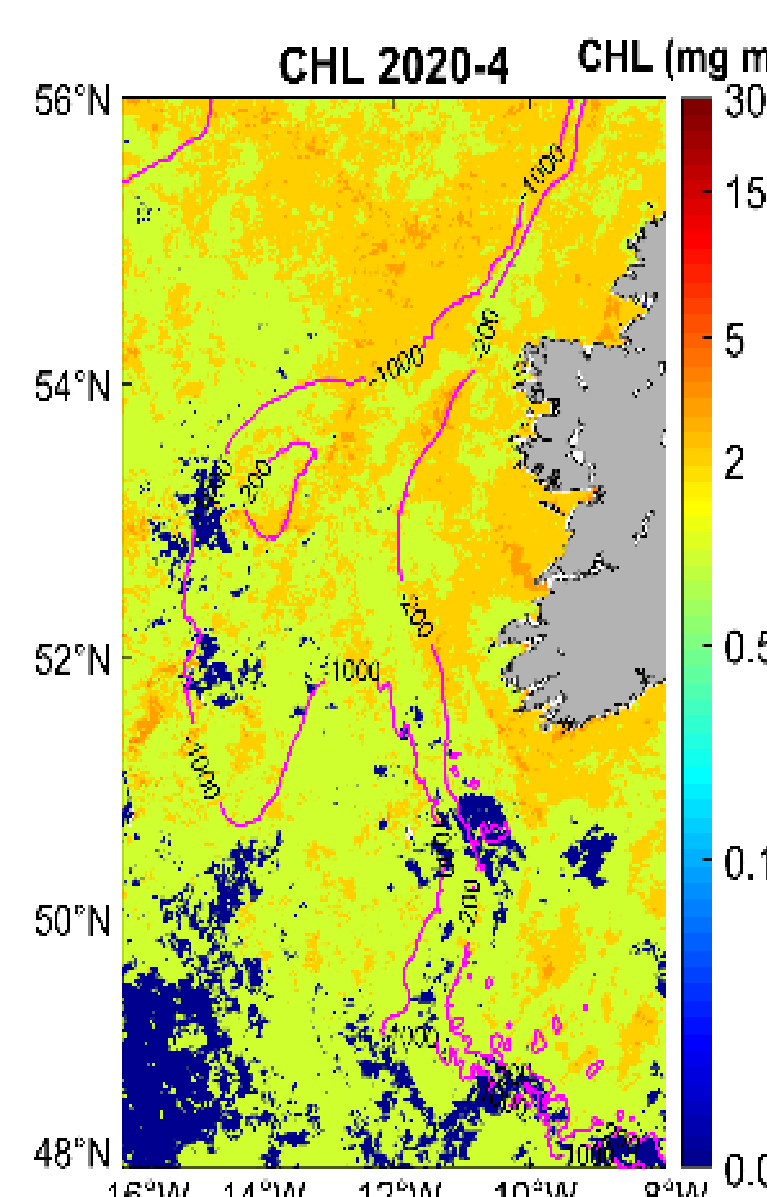
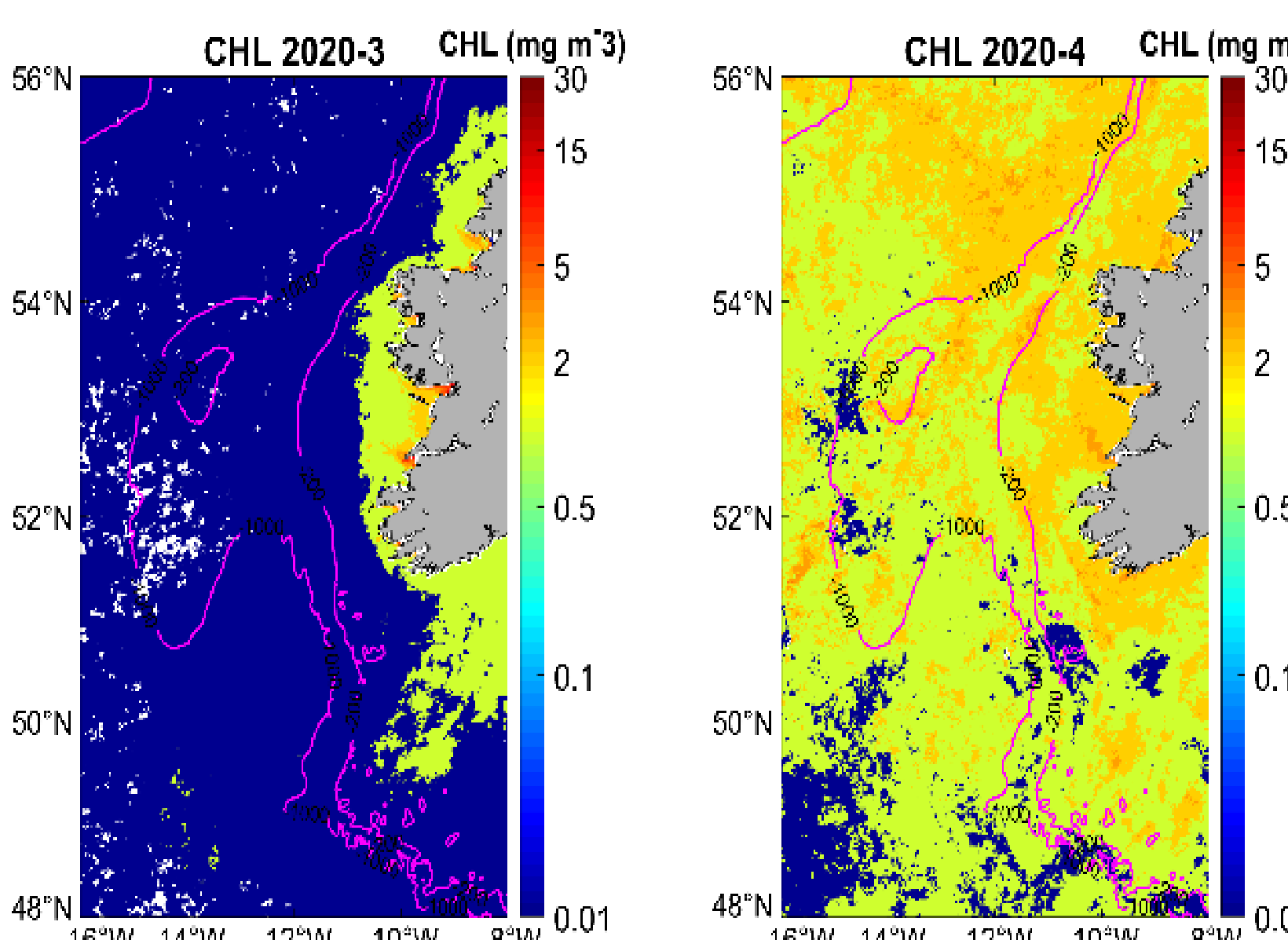
Temperature anomalies



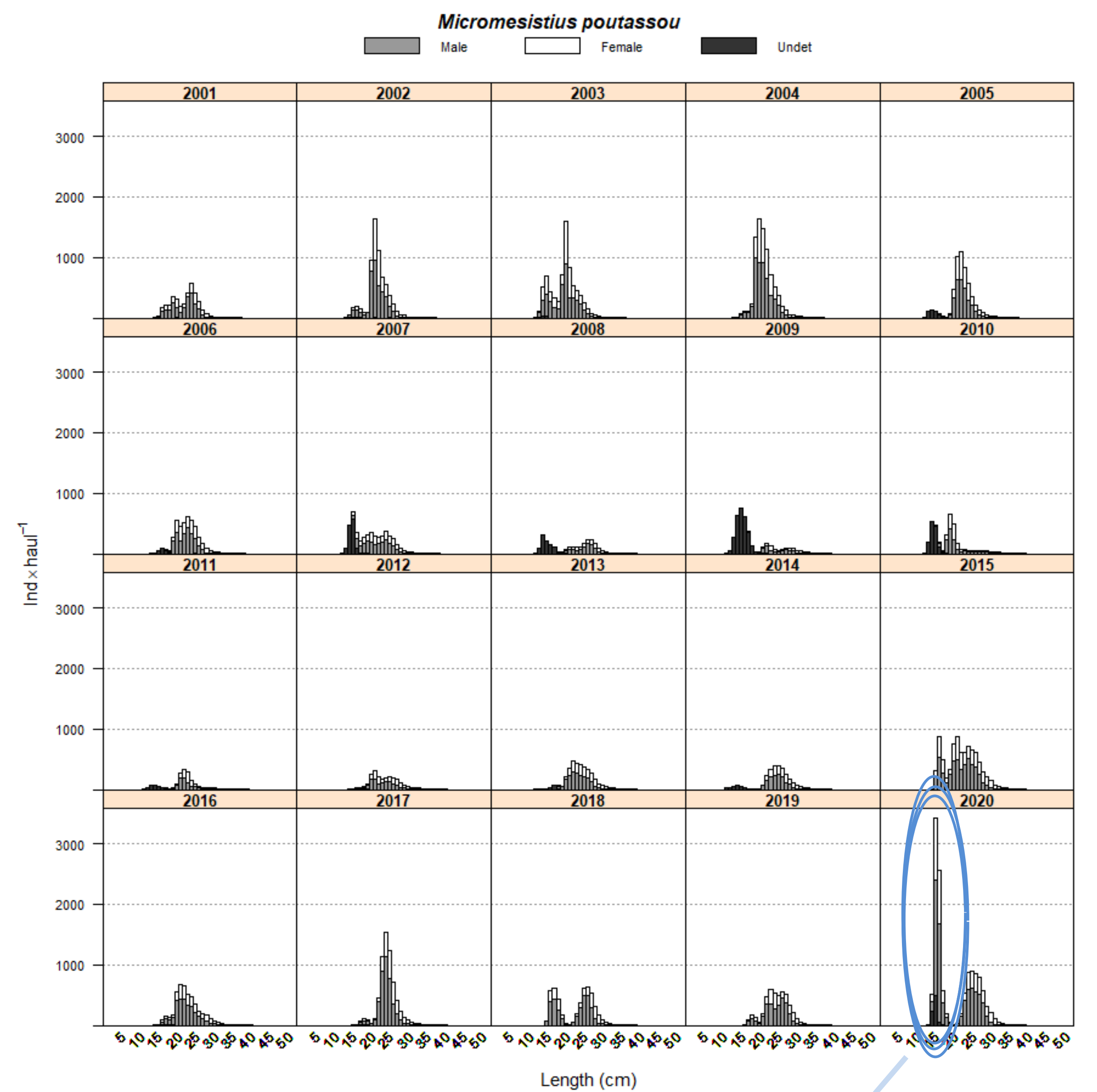
Wind Mixing Index (WMI) anomalies



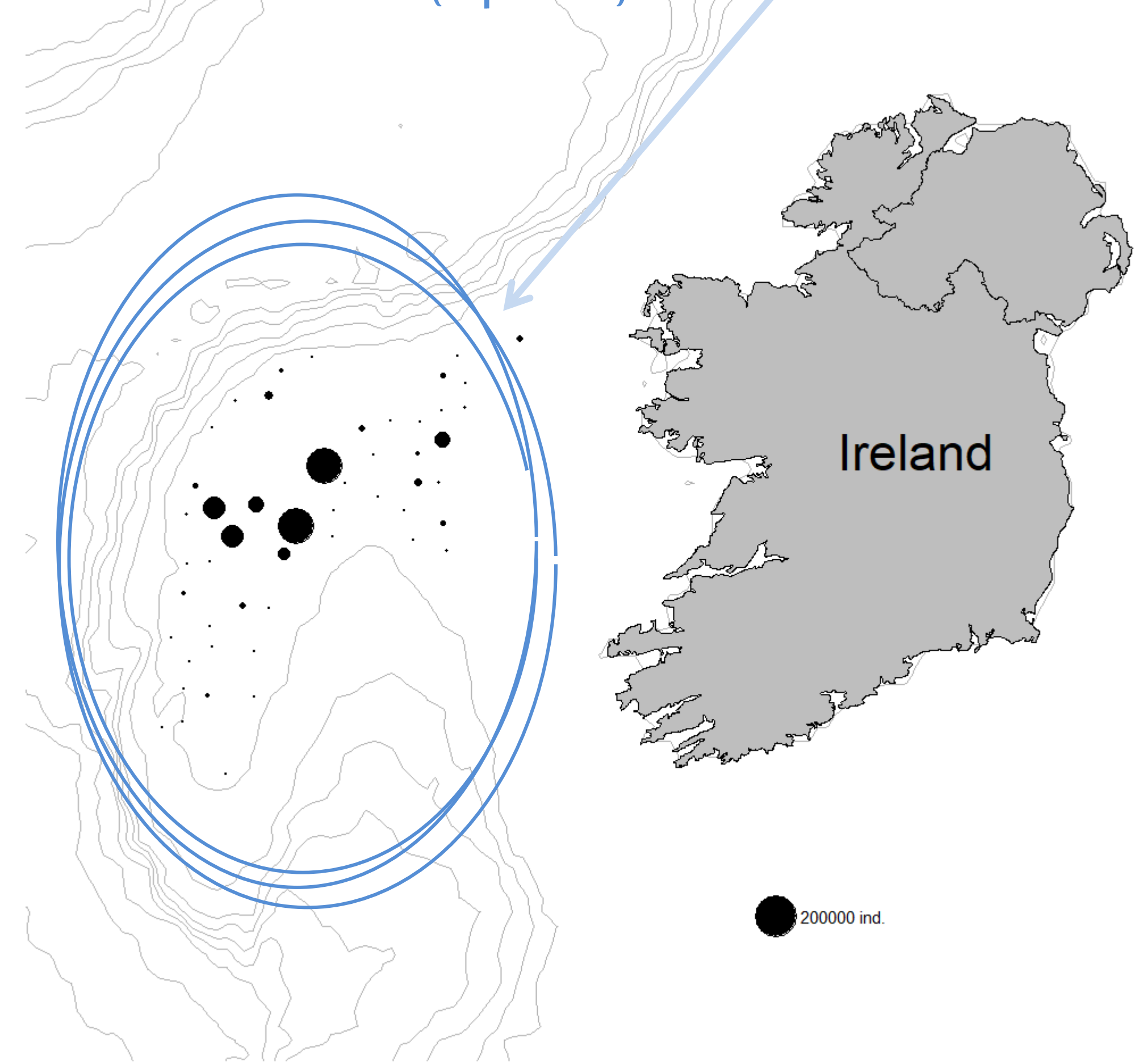
Ocean currents



Chlorophyll concentration



In 2020, the highest abundance of year-class recruits (total length < 20 cm) of *Micromesistius poutassou* was observed in the record of the **SPANISH BOTTOM TRAWL SURVEY ON THE PORCUPINE BANK (September)** from 2001-2020



In 2020, during the **BLUE WHITING-SPAWNING SEASON (March-April)**, the **calm wind situation** along with **weaker ocean currents** above the Porcupine Bank helped to accumulate **phytoplankton biomass**, thus promoting **secondary productivity**

The **optimal salinity** concentration, as well as **surface temperature** during this time, helped the buoyancy of eggs and larvae to the food-rich surface, thus improving the larval condition and enhanced the **survival rate**, which in turn resulted in the **largest recruitment** since 2001